

MONTHLY MEMBERSHIP PROGRESS REPORT

District 318 C

Results as of: 9/30/2024

GMT:

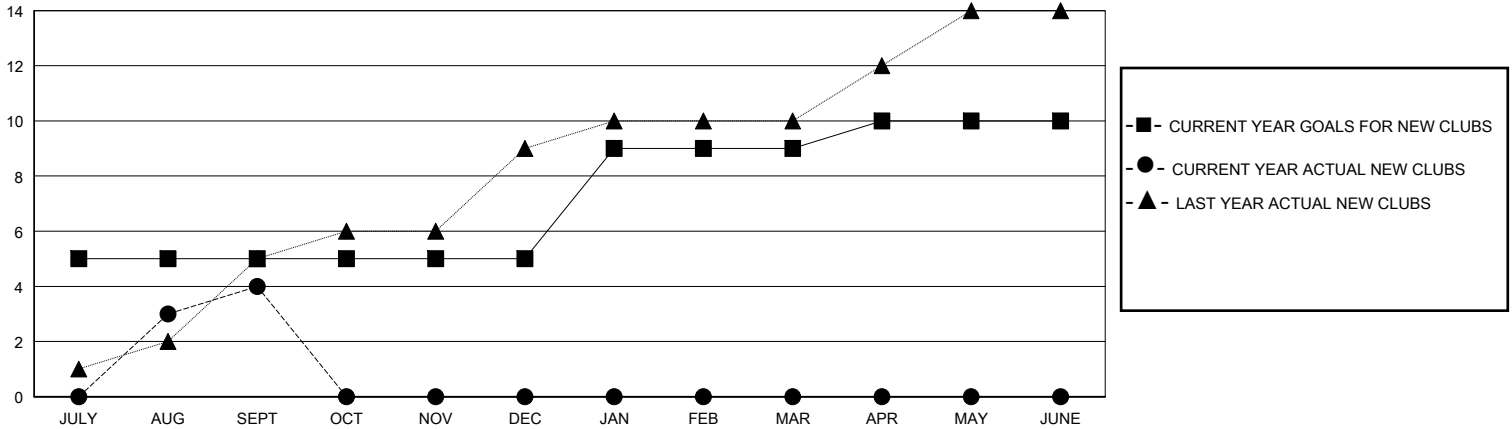
LOCATION INDIA

GMT CA

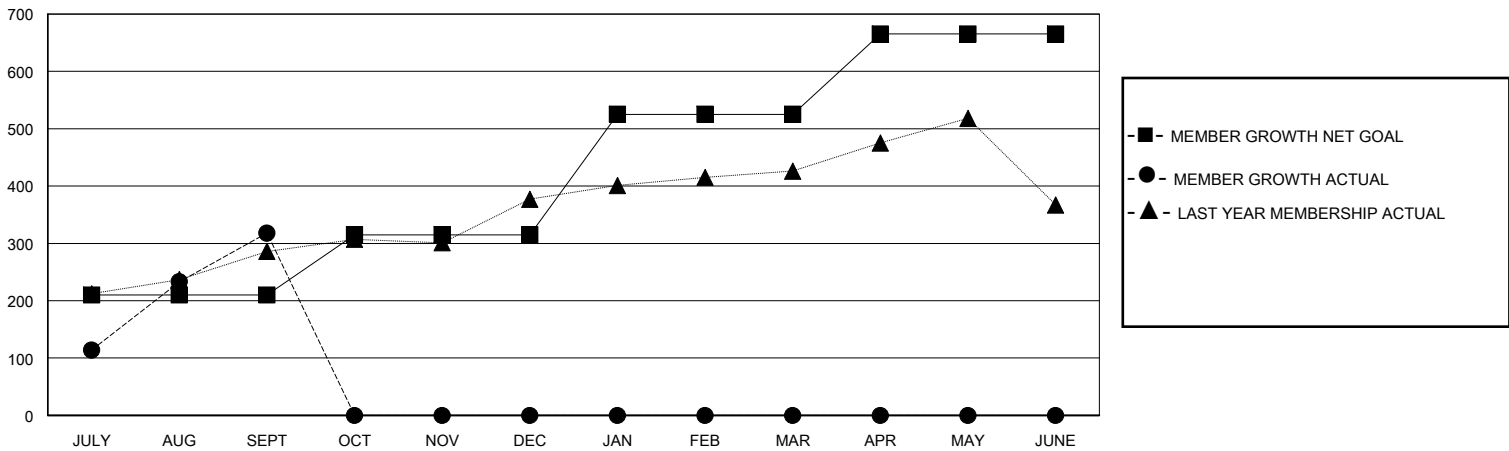
Clubs			
RESULTS FOR 2024-2025			
QUARTER	NEW CLUB GOAL	NEW CLUBS	DROPPED CLUBS
JULY/AUG/SEPT	5	4	1
OCT/NOV/DEC	0	0	0
JAN/FEB/MAR	4	0	0
APR/MAY/JUNE	1	0	0

Members			
RESULTS FOR 2024-2025			
QUARTER	MEMBER GROWTH NET GOAL	MEMBER GROWTH ACTUAL	DROPPED MEMBERS ACTUAL (including transfers)
JULY/AUG/SEPT	210	395	67
OCT/NOV/DEC	105	0	0
JAN/FEB/MAR	210	0	0
APR/MAY/JUNE	140	0	0

GOALS AND ACTUAL NEW CLUBS CUMULATIVE



GOALS AND ACTUAL MEMBERS CUMULATIVE



DROPPED CLUBS: 1	72 CLUBS OF 166 ADDED 1 OR MORE NEW MEMBERS	GENDER DISTRIBUTION	
		MALE 4,902 (86.49%)	FEMALE 766 (13.51%)
DROPPED MEMBERS		CLICK HERE FOR CUMULATIVE MEMBERSHIP DATA	TOTAL FAMILY UNIT MEMBERS 0
DECEASED 7	CLUB CANCELLED 0		FAMILY MEMBERS PAYING HALF DUES 0
OTHER 60	TOTAL 67		